

## MODEL: GRANDGLOW TLC5000 1D



- Can be applied to various fields, mainly for solar power, wind power, battery power, and scenery lamp power
- Advanced MPPT tracking technology, Wide MPPT voltage range.
- Strong IP65 protection, completed sealed cover suitable for harsh environment.
- No isolation transformer H6 full-bridge configuration, highest efficiency reach 98 %.
- Over voltage, short circuit, overload, overheating, Anti-islanding protection etc.
- Multiple Inverters can be operated in Parallel.
- LCD display, convenient for user to monitor main parameters.
- Support various Communication modes.
- 5-year warranty period, can be extended 10 year warranty.

| DC Input                                     |            |
|--|------------|
| Maximum DC Input Power                       | 5500W      |
| Maximum DC Input Voltage                     | 850VDC     |
| Maximum DC Input Current                     | 15A        |
| MPPT Tracking Number/<br>Input String Number | 1          |
| MPPT Tracking Voltage Range                  | 200-820VDC |
| Power Off/On Voltage                         | 200/300VDC |
|  |            |



# GRANDGLOW NEW ENERGY TECHNOLOGY CO.,LTD.

Add: No. 278, Zhongshan Avenue, Huangjinshan Development Zone, Huangshi, China Zip: 435000  
Tel: +86-714-6366111 Fax: +86-714-6368000 Email: sales7@grandsolar.cn M.P.: (wechat) +86-18995802555 Attn: Jason Zhang

| AC Output                 |   |
|---------------------------|---|
| Rated Power               | 5000W   |
| Voltage Range             | AC 400V(360-440V)<br>Adjustable according to different countries and regions requirement. |
| Rated Voltage Range       | 400VAC  |
| Frequency                 | 50Hz / 60Hz   |
| Phase number              | Three Phase   |
| Power Factor              | 0.99  |
| Max Output Current        | 7.5A  |
| Current THD               | At Rated Power And In The Sine Wave <3.5%   |
| Max Efficiency            | 98%   |
| Europe Efficiency         | 97%   |
| MPPT Efficiency           | 99.5%   |
| Structure                 |   |
| Protection Degree         | IP65  |
| Cooling Method            | Intelligent air cooling   |
| Noise                     | <50dB   |
| Data Interfaces           | RS 485/ RS 232/ (Standard), WiFi Modular(Optional)  |
| Isolation type            | Non-isolated  |
| Standby Power Consumption | 0W  |
| LCD Display               | LCD   |
| DC Switch                 | Integration   |
|                           |   |

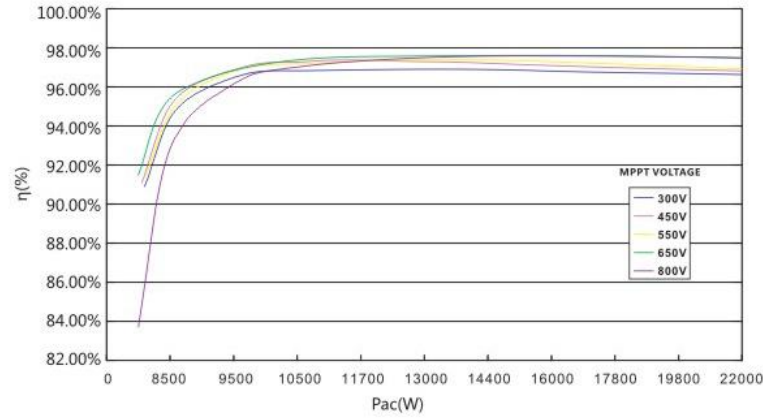


# GRANDGLOW NEW ENERGY TECHNOLOGY CO.,LTD.

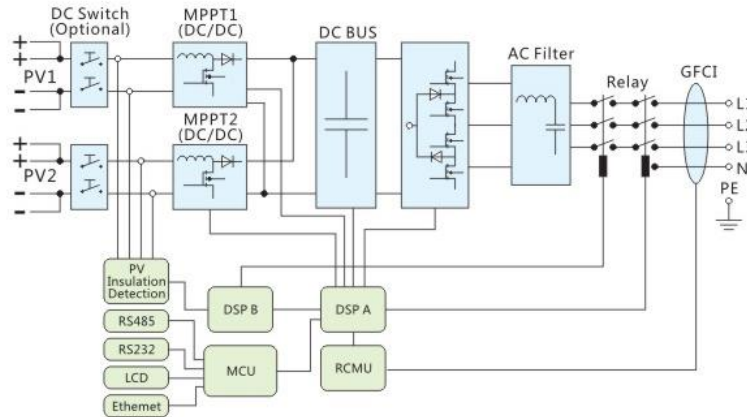
Add: No. 278, Zhongshan Avenue, Huangjinshan Development Zone, Huangshi, China Zip: 435000  
 Tel: +86-714-6366111 Fax: +86-714-6368000 Email: sales7@grandsolar.cn M.P.: (wechat) +86-18995802555 Attn: Jason Zhang

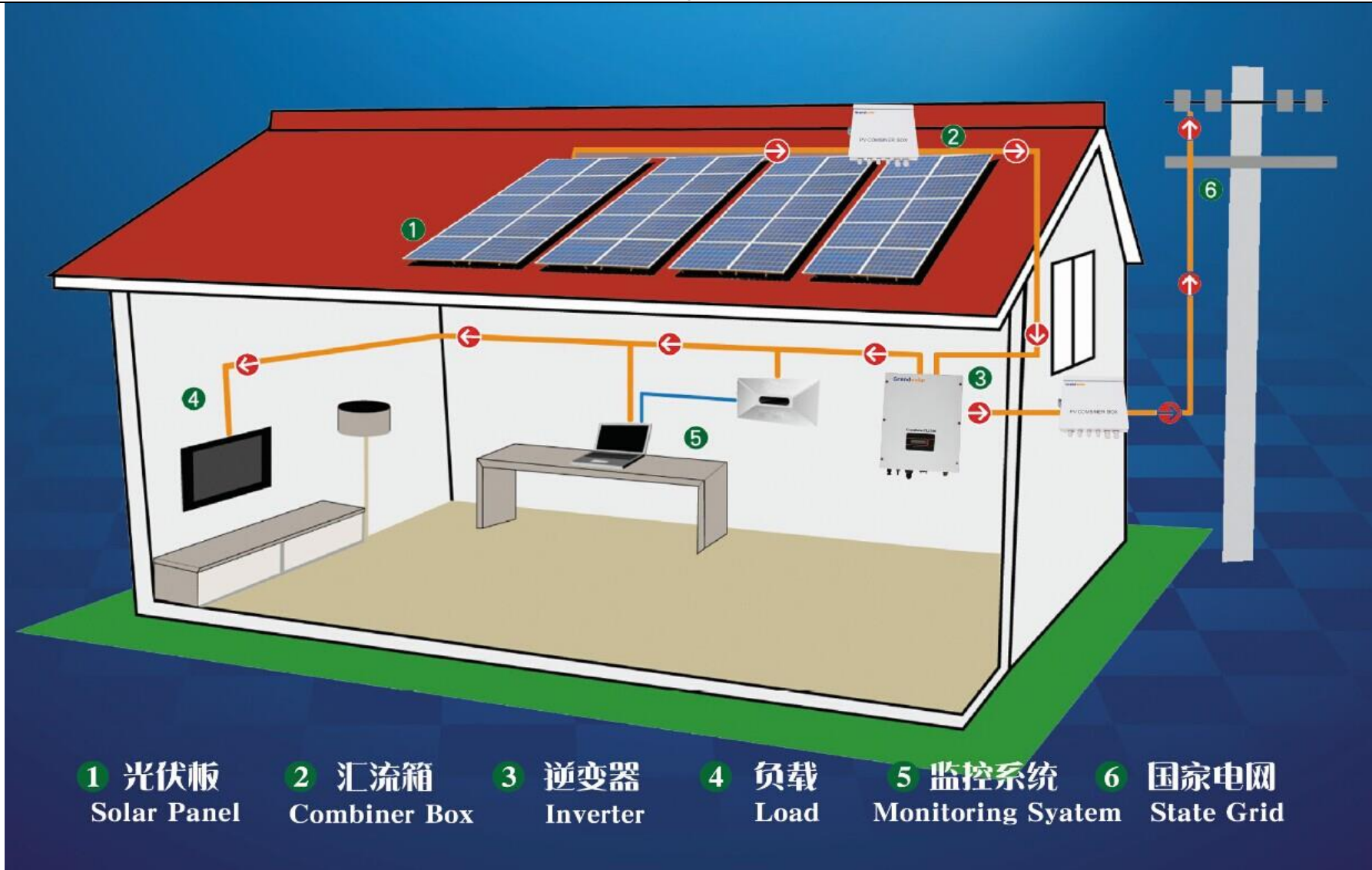
| Protection                      |   |
|---------------------------------|---|
| Support                         | DC Input Switch, Anti-island, Output Over-current, Input Reverse Connection, DC/AC Surge Protection, Insulation Resistance Testing, RCD Testing, Upgrade WIFI |
| RCD Testing                     | Support   |
| Protection (Inverter)           | Input Overvoltage, Output Short Circuit, Overload, Overheat   |
| Protection (Grid)               | Anti-islanding(IEEE1547), over/under voltage of grid, over/under frequency of grid.   |
| General Parameters              |   |
| Input Terminal                  | MC4   |
| Output Terminal                 | Connect Terminals   |
| Topology                        | No Transformer  |
| Warranty                        | 5 Years Warranty, Can Be Extended to 10 years   |
| State Grid Function             | Yes   |
| AC Switch                       | Integration   |
| Operation temperature Range     | Air Flow, -20 °C ~50 °C   |
| Storage temperature             | -25 °C ~ 60 °C  |
| Relative humidity               | 0~95%   |
| Environment                     | No Corrosion Gas, Flammable Gas, Gas Fumes and Dust Etc   |
| Altitude                        | 6600 Feet 2000m, Max. 3000m   |
| Size                            | 440x560x260mm   |
| Weight                          | 38kgs   |
| * OEM available, ODM available. |   |

Efficiency Curve: GrandGlowTLC8000-15000



The Topology Diagram: GrandGlowTLC3000-15000









# GRANDGLOW NEW ENERGY TECHNOLOGY CO.,LTD.

Add: No. 278, Zhongshan Avenue, Huangjinshan Development Zone, Huangshi, China Zip: 435000  
Tel: +86-714-6366111 Fax: +86-714-6368000 Email: sales7@grandsolar.cn M.P.: (wechat) +86-18995802555 Attn: Jason Zhang



## About Grandglow

Grandglow New Energy Technology Co., Ltd. is specialized in the field of R&D, manufacture and market of the New Energy Electrical & Electronic Products, including:

- Grid Tie Solar Inverter
- Off Grid Solar Inverter
- Solar Pump Inverter
- PV combiner box
- Solar Charge Controller
- Solar Power System Design and Install.

Company Area: 66000m<sup>2</sup>, 4 workshops.

Quality Certification: CE, TUV, VDE, SAA, IEC, G83, En62019, etc.

Brand Concept:

- Higher Quality
- Higher Service
- Better Cost Performance.

Company Pursuit:

- Innovation
- Excellence
- Outstanding